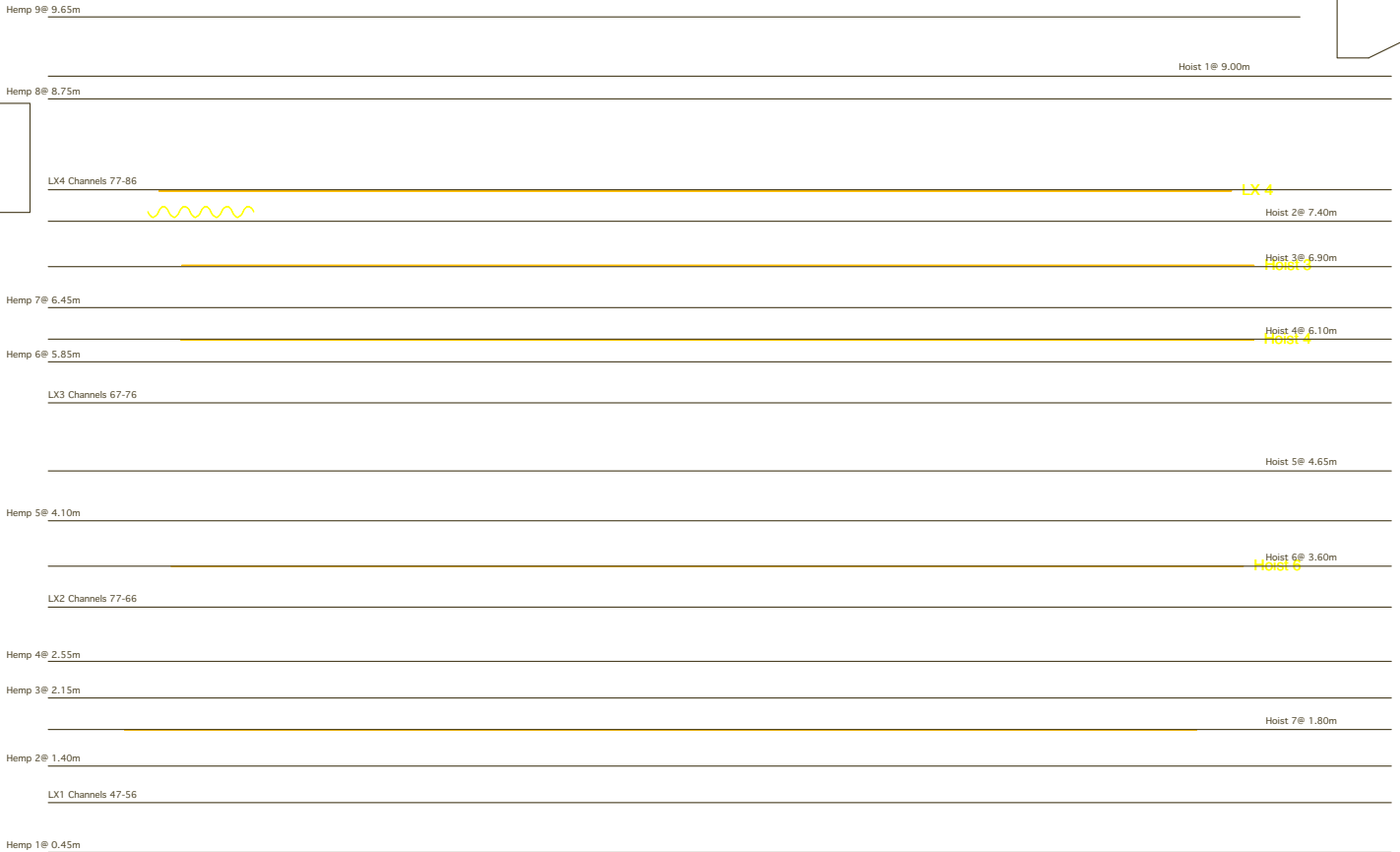


STAGE ENTRANCE



12.80m



Temporary Bar

NEW STAGE FRONT

FOH Bridge 1 Channels 21-30

Skw on Bridge 1

Bo

FOH Bridge 2 Channels 11-20

Bo

FOH Bridge 3 Channels 1-10

Note: These Channels are duplicated SL Dips

Skw on Bridge 3

Instruments	
	Cyc Floods
	Robe ColorSpot
	PAR 64 MFL
	PAR 64 VNSP
	1.2 kW Fresnel
	Lehollip 18/30
	2 kW PC
Accessories	
	Color
	Scatole
Legend	
	Color Channel